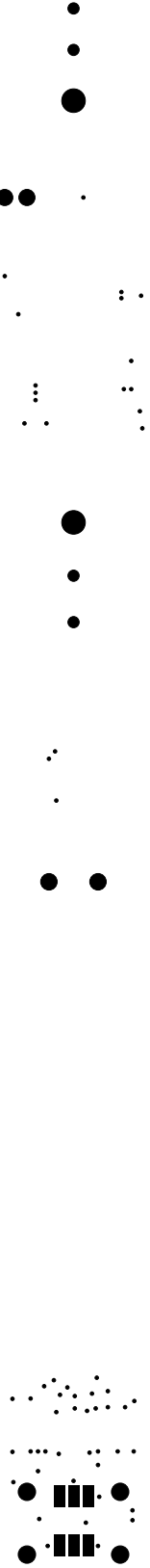


LAYER	Secondary Side Silkscreen
-------	---------------------------

┌

└

LAYER	Secondary Side Soldermask
-------	---------------------------



└

┌

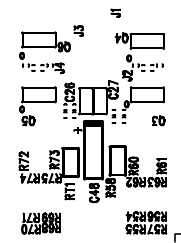
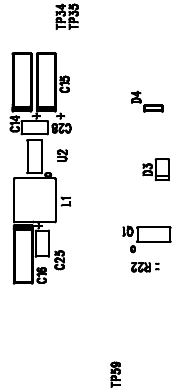
L

L

L

L

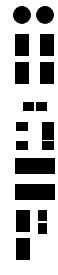
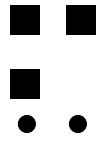
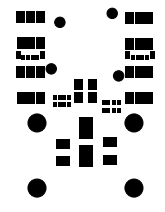
LAYER	Primary Side Silkscreen
-------	-------------------------



┌

└

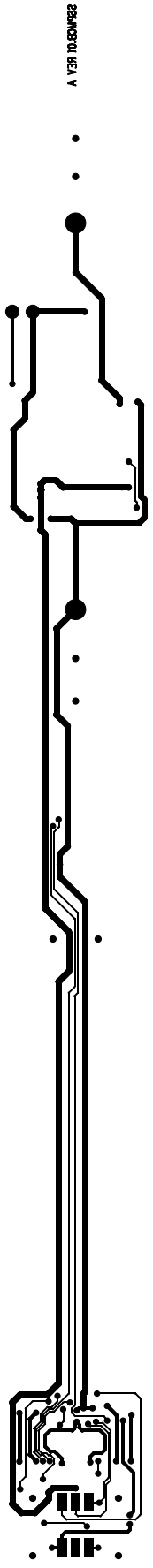
LAYER	Primary Side Soldermask
-------	-------------------------



┌

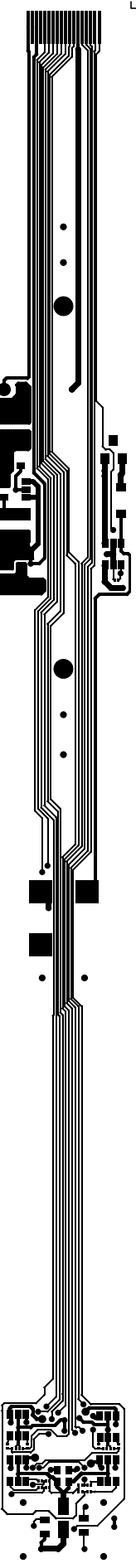
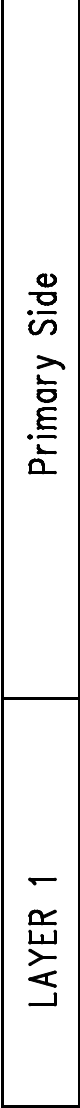
└

LAYER 2 Secondary Side



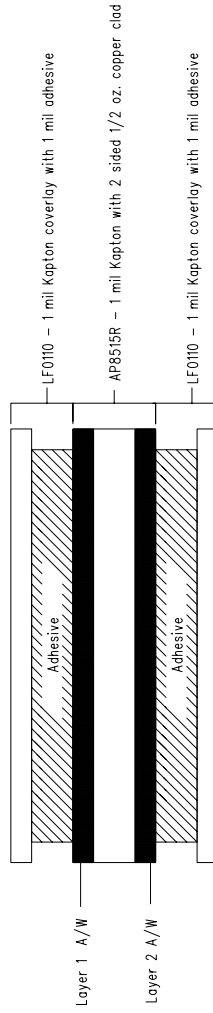
L

L

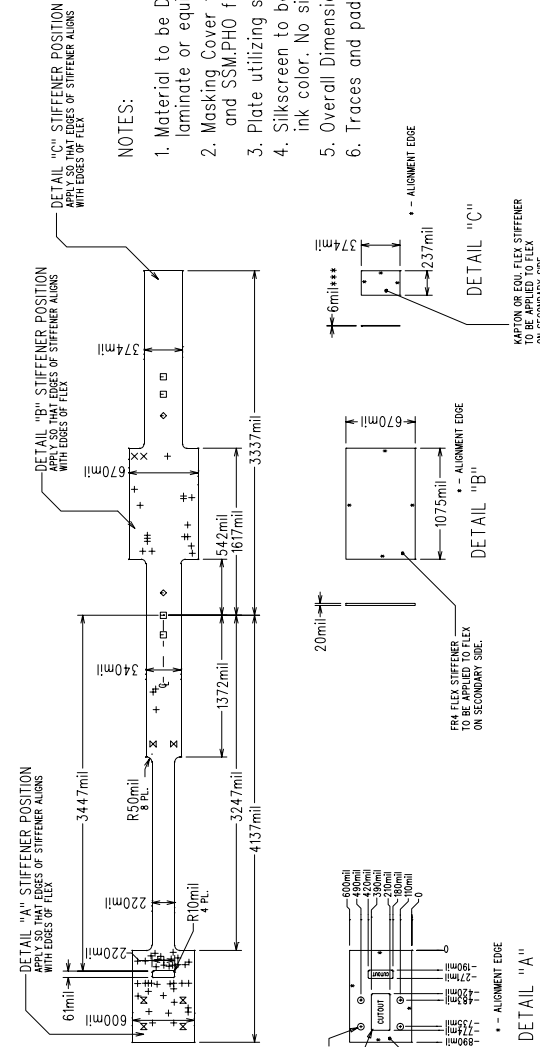


L

L



SIZE (mils)	QTY	SYM	PTLD	TOL (mils)
10	56	+	P	+2/-10
38	2	X	P	+/-3
40	4	□	NP	+/-3
50	2	◇	P	+/-3
62	2	⊗	NP	+/-3
65	4	⊗	NP	+/-3



NOTES:

1. Material to be Dupont Pyralux AP8515R rolled, annealed laminate or equivalent material.
2. Masking Cover to utilize LF0110 Material. Use PSM:PHO and SSM:PHO for Masking Pattern.
3. Plate utilizing selective plate process. Finish using Tin/Lead 60/40.
4. Silkscreen to be applied on both sides using contrasting ink color. No silk to appear on exposed pads.
5. Overall Dimensions to be within +/- 0.003".
6. Traces and pads close to edge of material are by design.

FRA FLEX STIFFENER TO BE APPLIED TO FLEX ON SECONDARY SIDE.

FRK FLEX STIFFENER TO BE APPLIED TO FLEX ON SECONDARY SIDE.

KAPTON OR EQUI FLEX STIFFENER TO BE APPLIED TO FLEX ON SECONDARY SIDE. OF FLEX CIRCUIT AND STIFFENER TO BE 12 MILS +/- 0.5 MILS